

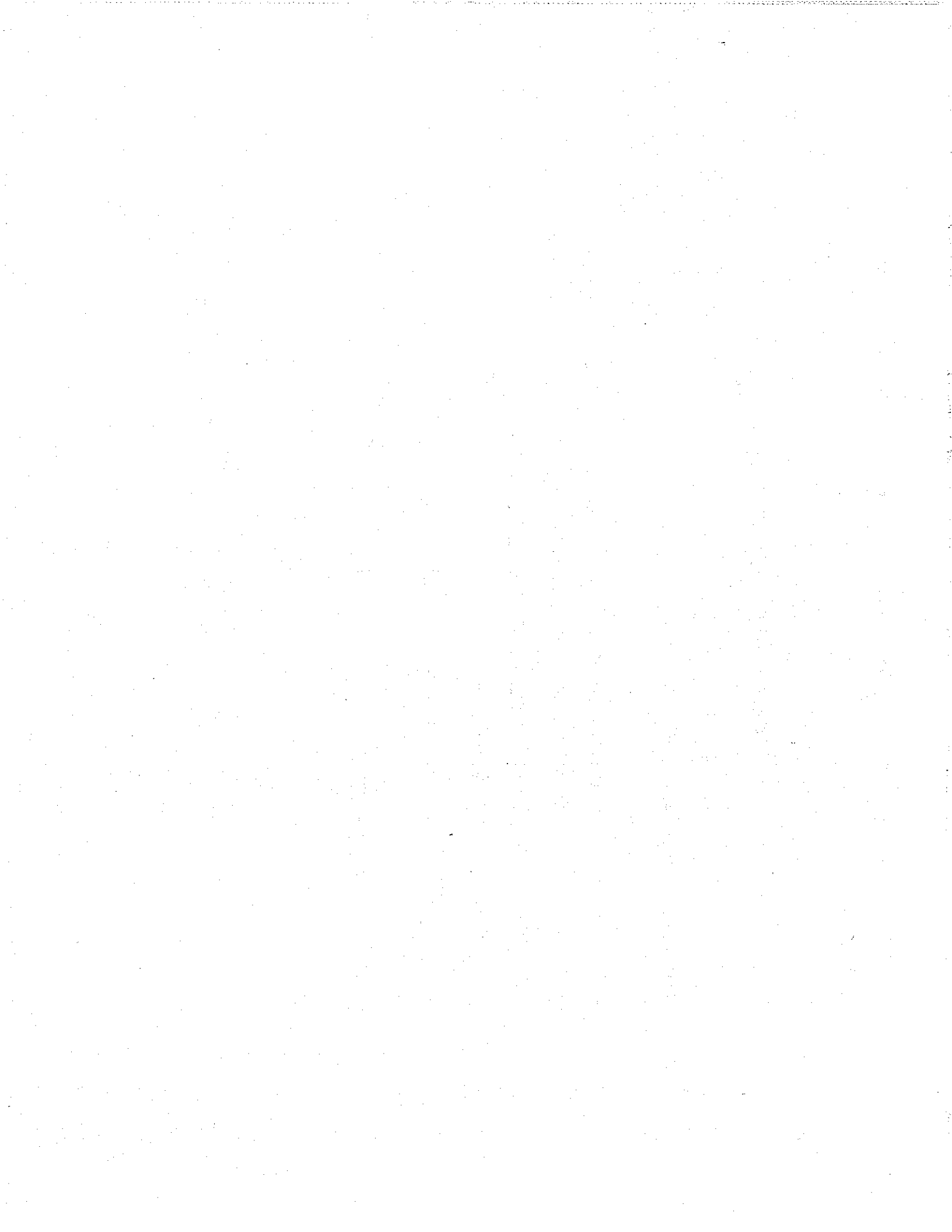
COMPUTER CHECK REGISTER

CHECK REGISTER APPROVAL

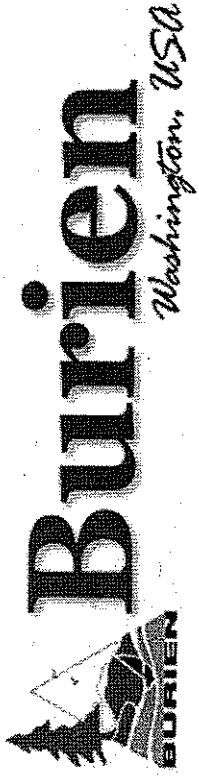
WE, THE MEMBERS OF THE CITY COUNCIL OF BURIEN, WASHINGTON, HAVING RECEIVED DEPARTMENT
CERTIFICATION THAT MERCHANDISE AND/OR SERVICES HAVE BEEN RECEIVED OR RENDERED, DO HEREBY
APPROVE FOR PAYMENT ON This 21st day of November, 2011 the FOLLOWING:

CHECK NOS. 30007-30163
IN THE AMOUNTS OF \$1,947,943.57

WITH VOIDED CHECK NOS. 30092



Accounts Payable Checks for Approval



User: CathyR

Printed: 11/16/2011 - 1:05 PM

Check Number	Check Date	Fund Name	Account Name	Vendor Name	Amount
30007	11/21/2011	Surface Water Management Fund	Repairs And Maintenance	ACE Hardware	23.61
30007	11/21/2011	Street Fund	Repairs And Maintenance	ACE Hardware	27.36
30007	11/21/2011	Street Fund	Office And Operating Supplies	ACE Hardware	20.01
30007	11/21/2011	Street Fund	Repairs And Maintenance	ACE Hardware	26.38
30007	11/21/2011	Street Fund	Repairs And Maintenance	ACE Hardware	40.50
30007	11/21/2011	Street Fund	Office And Operating Supplies	ACE Hardware	5.46
Check Total:					143.32
30008	11/21/2011	General Fund	Subscriptions/publications	Attorney's Eagle Eye Service	59.13
Check Total:					59.13
30009	11/21/2011	General Fund	Rental & Lease	AGRII Party & Events	724.35
Check Total:					724.35
30010	11/21/2011	General Fund	Office And Operating Supplies	AIRGAS-NORPAC, INC.	23.49
Check Total:					23.49
30011	11/21/2011	General Fund	Prof. Svcs-instructors	Pamela Ann Allen	501.60
Check Total:					501.60
30012	11/21/2011	Street Fund	Repairs And Maintenance	Alpine Fence Company	467.54
30012	11/21/2011	Street Fund	Repairs And Maintenance	Alpine Fence Company	36.30
30012	11/21/2011	Street Fund	Repairs And Maintenance	Alpine Fence Company	831.65
30012	11/21/2011	Street Fund	Repairs And Maintenance	Alpine Fence Company	542.03
30012	11/21/2011	Street Fund	Repairs And Maintenance	Alpine Fence Company	343.56
Check Total:					2349.08

Check Number	Check Date	Fund Name	Account Name	Vendor Name	Amount
				Check Total:	2,221.08
30013	11/21/2011	General Fund	Office and Operating Supplies	Amerigas - Kent	906.06
				Check Total:	906.06
30014	11/21/2011	General Fund	Office and Operating Supplies	Atlantis Designs	42.00
				Check Total:	42.00
30015	11/21/2011	General Fund	Teen Programs	Brian J Barnes	761.44
				Check Total:	761.44
30016	11/21/2011	Parks & Gen Gov't CIP	Pre-design Engineering	Tom Beckwith FAICP	5,611.50
				Check Total:	5,611.50
30017	11/21/2011	General Fund	Printing	Brim Press, LLC	32.85
30017	11/21/2011	General Fund	Printing	Brim Press, LLC	32.85
30017	11/21/2011	General Fund	Printing	Brim Press, LLC	32.85
30017	11/21/2011	General Fund	Quarterly Newsletter	Brim Press, LLC	365.49
30017	11/21/2011	General Fund	Quarterly Newsletter	Brim Press, LLC	32.85
				Check Total:	496.89
30018	11/21/2011	General Fund	Prof. Svcs-instructors	Viola Brumbaugh	943.46
				Check Total:	943.46
30019	11/21/2011	Street Fund	Office And Operating Supplies	Bryant's Tractor & Mower, Inc.	23.15
30019	11/21/2011	Surface Water Management Fund	Office And Operating Supplies	Bryant's Tractor & Mower, Inc.	23.15
30019	11/21/2011	Surface Water Management Fund	Office And Operating Supplies	Bryant's Tractor & Mower, Inc.	37.51
30019	11/21/2011	Street Fund	Office And Operating Supplies	Bryant's Tractor & Mower, Inc.	37.52
30019	11/21/2011	Street Fund	Office And Operating Supplies	Bryant's Tractor & Mower, Inc.	89.17
30019	11/21/2011	Surface Water Management Fund	Office And Operating Supplies	Bryant's Tractor & Mower, Inc.	89.16
30019	11/21/2011	Street Fund	Office And Operating Supplies	Bryant's Tractor & Mower, Inc.	39.06
30019	11/21/2011	Surface Water Management Fund	Office And Operating Supplies	Bryant's Tractor & Mower, Inc.	39.06
30019	11/21/2011	Surface Water Management Fund	Office And Operating Supplies	Bryant's Tractor & Mower, Inc.	39.06
30019	11/21/2011	Street Fund	Office And Operating Supplies	Bryant's Tractor & Mower, Inc.	39.06
30019	11/21/2011	Street Fund	Office And Operating Supplies	Bryant's Tractor & Mower, Inc.	38.33
30019	11/21/2011	Surface Water Management Fund	Office And Operating Supplies	Bryant's Tractor & Mower, Inc.	38.32

Check Number	Check Date	Fund Name	Account Name	Vendor Name	Amount
30020	11/21/2011	General Fund	Professional Services	Center for Ethical Leadership	532.55
				Check Total:	1,050.00
30021	11/21/2011	General Fund	Office and Operating Supplies	Clay Art Center, Inc.	250.76
30022	11/21/2011	General Fund	Telephone	CenturyLink	44.77
30022	11/21/2011	Surface Water Management Fund	Telephone	CenturyLink	48.35
30022	11/21/2011	Street Fund	Telephone	CenturyLink	48.34
				Check Total:	250.76
30023	11/21/2011	General Fund	Online Video Streaming	COMCAST	141.46
30023	11/21/2011	General Fund	Telephone	COMCAST	57.73
				Check Total:	69.90
30024	11/21/2011	General Fund	Office/operating Supplies	Complete Office	127.63
30024	11/21/2011	General Fund	Office/operating Supplies	Complete Office	196.08
30024	11/21/2011	General Fund	Office And Operating Supplies	Complete Office	220.75
30024	11/21/2011	General Fund	Office And Operating Supplies	Complete Office	171.62
30024	11/21/2011	General Fund	Office And Operating Supplies	Complete Office	171.62
30024	11/21/2011	General Fund	Office And Operating Supplies	Complete Office	220.75
30024	11/21/2011	General Fund	Office And Operating Supplies	Complete Office	24.46
30024	11/21/2011	General Fund	Office/Operating Supplies	Complete Office	24.46
30024	11/21/2011	General Fund	Office And Operating Supplies	Complete Office	24.46
30024	11/21/2011	General Fund	Office And Operating Supplies	Complete Office	772.36
30024	11/21/2011	Street Fund	Machinery/eqpt - Uncapitalized	Complete Office	338.91
30024	11/21/2011	Surface Water Management Fund	Machinery/eqpt - Uncapitalized	Complete Office	338.90
30024	11/21/2011	Equipment Reserve Fund	Machinery/eqpt - Noncapitalized	Complete Office	677.81
				Check Total:	3,182.18
30025	11/21/2011	General Fund	Instructors Prof Svcs	Janet S. Crawley	484.00
30025	11/21/2011	General Fund	Prof. Svcs-instructors	Janet S. Crawley	443.45
				Check Total:	927.45
30026	11/21/2011	General Fund	Office And Operating Supplies	Crystal Springs	69.73

Check Number	Check Date	Fund Name	Account Name	Vendor Name	Amount
30027	11/21/2011	General Fund	Software Subscription Fees	City of Bellevue Treasurer	69.73
				Check Total:	3,531.55
30028	11/21/2011	General Fund	Utilities	City of Seattle	16.74
30028	11/21/2011	General Fund	Utilities	City of Seattle	12.39
30028	11/21/2011	General Fund	Utilities	City of Seattle	31.76
30028	11/21/2011	Street Fund	Utilities-street Lighting	City of Seattle	3,987.85
30028	11/21/2011	Street Fund	Utilities - Traffic Signals	City of Seattle	1,091.76
30028	11/21/2011	Street Fund	Utilities - Traffic Signals	City of Seattle	442.36
				Check Total:	5,582.86
30029	11/21/2011	General Fund	State Lobbying Services	Michael D. Doubleday	2,850.00
				Check Total:	2,850.00
30030	11/21/2011	Surface Water Management Fund	NPDES Phase II	DAS Manufacturing, Inc.	190.44
30030	11/21/2011	Surface Water Management Fund	NPDES Phase II	DAS Manufacturing, Inc.	30.90
				Check Total:	221.34
30031	11/21/2011	Surface Water Management Fund	Regional Watershed (wria9)	Department of Ecology	433.00
30031	11/21/2011	Surface Water Management Fund	Regional Watershed (wria9)	Department of Ecology	4,355.81
				Check Total:	4,788.81
30032	11/21/2011	General Fund	Comp Plan Implementation Costs	Duncanson Company, Inc.	1,200.00
				Check Total:	1,200.00
30033	11/21/2011	General Fund	Office and Operating Supplies	Destiny Worldwide	406.78
30033	11/21/2011	General Fund	Office And Operating Supplies	Destiny Worldwide	293.75
				Check Total:	700.53
30034	11/21/2011	General Fund	Repair/maint-vehicle	Eldrew, LLC	11.83
				Check Total:	11.83

Check Number	Check Date	Fund Name	Account Name	Vendor Name	Amount
30035	11/21/2011	Surface Water Management Fund	NPDES Phase II	Environmental Science Center	5,554.00
Check Total:					5,554.00
30036	11/21/2011	General Fund	MIS Plan Implementation	Environmental Systems Research	4,660.00
Check Total:					4,660.00
30037	11/21/2011	General Fund	City Hall Bldg Maintenance	Flags-A-Flying, LLC	226.01
Check Total:					226.01
30038	11/21/2011	Transportation CIP	Transpo Master Plan	Fehr and Peers	24,601.29
30038	11/21/2011	General Fund	P/H Heal Grant Exps	Fehr and Peers	8,630.00
Check Total:					33,231.29
30039	11/21/2011	General Fund	Fuel/gas consumption	Fleet Services	63.84
30039	11/21/2011	General Fund	Fuel/gas/gasoline Consumption	Fleet Services	356.65
30039	11/21/2011	Street Fund	Fuel/gas/gasoline consumption	Fleet Services	2,004.69
30039	11/21/2011	Surface Water Management Fund	Fuel/gas/gasoline consumption	Fleet Services	1,900.86
30039	11/21/2011	General Fund	Fuel/gas/gasoline Consumption	Fleet Services	346.64
30039	11/21/2011	General Fund	Fuel/gas/gasoline Consumption	Fleet Services	445.33
30039	11/21/2011	General Fund	Fuel/Gas Consumption	Fleet Services	57.01
Check Total:					5,175.02
30040	11/21/2011	Street Fund	Repairs And Maintenance	Heather Sice/Flyer Electric	163.43
30040	11/21/2011	Surface Water Management Fund	Repairs And Maintenance	Heather Sice/Flyer Electric	163.43
Check Total:					326.86
30041	11/21/2011	General Fund	Rental & Lease	FunRent	430.00
Check Total:					430.00
30042	11/21/2011	General Fund	Professional Services	Gray & Osborne, Inc.	241.53
Check Total:					241.53
30043	11/21/2011	General Fund	Instructors Prof Svcs	Carol Gouthro	360.00
Check Total:					360.00

Check Number	Check Date	Fund Name	Account Name	Vendor Name	Amount
				Check Total:	360.00
30044	11/21/2011	General Fund	Instructors Prof Svcs	Alina Gridley	40.00
				Check Total:	40.00
30045	11/21/2011	General Fund	Parks Building Security	Guardian Security	65.00
				Check Total:	65.00
30046	11/21/2011	General Fund	Human Svc-family/youth	Highline Area Food Bank	2,500.00
				Check Total:	2,500.00
30047	11/21/2011	General Fund	Instructors Prof Svcs	Victoria E. Hamilton	330.00
30047	11/21/2011	General Fund	Instructors Prof Svcs	Victoria E. Hamilton	333.00
				Check Total:	663.00
30048	11/21/2011	General Fund	Nuisance Abatement Costs	HOME DEPOT	176.24
30048	11/21/2011	Street Fund	Office And Operating Supplies	HOME DEPOT	120.38
30048	11/21/2011	Surface Water Management Fund	Office And Operating Supplies	HOME DEPOT	120.39
30048	11/21/2011	Surface Water Management Fund	Office And Operating Supplies	HOME DEPOT	121.40
30048	11/21/2011	Street Fund	Office And Operating Supplies	HOME DEPOT	121.39
				Check Total:	659.80
30049	11/21/2011	Street Fund	Repairs And Maintenance	Hi-Line, Inc.	120.85
30049	11/21/2011	Surface Water Management Fund	Repairs And Maintenance	Hi-Line, Inc.	120.85
				Check Total:	241.70
30050	11/21/2011	General Fund	Human Svc-family/youth	Highline Medical Group	2,500.00
				Check Total:	2,500.00
30051	11/21/2011	General Fund	Operating Rentals and Leases	Head-quarters	81.50
				Check Total:	81.50
30052	11/21/2011	Surface Water Management Fund	Repairs And Maintenance	IBS, INC.	30.59

Check Number	Check Date	Fund Name	Account Name	Vendor Name	Amount
30053	11/21/2011	Street Fund	Repairs And Maintenance	ICON Materials	30.59
30053	11/21/2011	Surface Water Management Fund	Repairs And Maintenance	ICON Materials	249.57
30053	11/21/2011	Surface Water Management Fund	Repairs And Maintenance	ICON Materials	249.57
30053	11/21/2011	Street Fund	Repairs And Maintenance	ICON Materials	42.98
30053	11/21/2011	Surface Water Management Fund	Repairs And Maintenance	ICON Materials	42.98
30053	11/21/2011	Street Fund	Repairs And Maintenance	ICON Materials	491.07
30053	11/21/2011	Surface Water Management Fund	Repairs And Maintenance	ICON Materials	64.47
30053	11/21/2011	Street Fund	Repairs And Maintenance	ICON Materials	64.47
30053	11/21/2011	Surface Water Management Fund	Repairs And Maintenance	ICON Materials	234.74
30053	11/21/2011	Street Fund	Repairs And Maintenance	ICON Materials	234.73
30053	11/21/2011	Surface Water Management Fund	Repairs And Maintenance	ICON Materials	113.34
30053	11/21/2011	Street Fund	Repairs And Maintenance	ICON Materials	113.33
30053	11/21/2011	Surface Water Management Fund	Repairs And Maintenance	ICON Materials	376.41
30053	11/21/2011	Street Fund	Repairs And Maintenance	ICON Materials	376.41
Check Total:					2,654.07
30054	11/21/2011	General Fund	Operating Rents & Leases	IKON Office Solutions	455.54
30054	11/21/2011	General Fund	Operating Rents & Leases	IKON Office Solutions	321.93
Check Total:					777.47
30055	11/21/2011	General Fund	Miscellaneous	Iron Mountain Rec. Management	40.65
30055	11/21/2011	General Fund	Miscellaneous	Iron Mountain Rec. Management	213.15
Check Total:					253.80
30056	11/21/2011	General Fund	Telephone	Integra Telecom	1,304.80
30056	11/21/2011	General Fund	Telephone	Integra Telecom	163.41
30056	11/21/2011	General Fund	Telephone	Integra Telecom	136.18
30056	11/21/2011	General Fund	Telephone	Integra Telecom	54.47
30056	11/21/2011	General Fund	Telephone	Integra Telecom	108.94
30056	11/21/2011	General Fund	Telephone	Integra Telecom	272.36
30056	11/21/2011	General Fund	Telephone	Integra Telecom	136.18
30056	11/21/2011	General Fund	Telephone	Integra Telecom	163.41
30056	11/21/2011	General Fund	Telephone	Integra Telecom	326.83
Check Total:					2,666.58
30057	11/21/2011	General Fund	Citizens Patrol/ Crime Prevent	Interstate Tire & Automotive	43.17

Check Number	Check Date	Fund Name	Account Name	Vendor Name	Amount
30058	11/21/2011	General Fund	Travel	Stephanie Jewett	43.17
30058	11/21/2011	General Fund	Travel	Stephanie Jewett	21.81
				Check Total:	368.21
				Check Total:	390.02
30059	11/21/2011	Street Fund	Office And Operating Supplies	King County Fleet Adm.	47.40
30059	11/21/2011	Street Fund	Repairs And Maintenance	King County Fleet Adm.	523.42
				Check Total:	570.82
30060	11/21/2011	General Fund	Substance Abuses	King County Finance	2,536.53
				Check Total:	2,536.53
30061	11/21/2011	General Fund	Police Contract - King Co	King County Sheriff's Office	806,733.83
30061	11/21/2011	General Fund	Police Contract - King Co	King County Sheriff's Office	806,733.83
				Check Total:	1,613,467.66
30062	11/21/2011	General Fund	Jail contracts	KING COUNTY FINANCE	36,527.43
				Check Total:	36,527.43
30063	11/21/2011	Surface Water Management Fund	Swm Billed By Swm Dept	King County Office of Finance	75,296.59
30063	11/21/2011	Surface Water Management Fund	Regional Watershed (wria9)	King County Office of Finance	5,851.00
				Check Total:	81,147.59
30064	11/21/2011	General Fund	Attorney Svcs - Litigation	Kenyon Disend, PLLC	1,625.05
				Check Total:	1,625.05
30065	11/21/2011	General Fund	Instructors Prof Svcs	North American Youth Activitie	1,685.60
				Check Total:	1,685.60
30066	11/21/2011	General Fund	Registration - Training/workshp	K. SCOTT KIMERER	1,154.44

Check Number	Check Date	Fund Name	Account Name	Vendor Name	Amount
30067	11/21/2011	General Fund	Public Defender	Kirshenbaum & Goss, Inc., P.S	1,154.44
				Check Total:	6,095.00
30068	11/21/2011	General Fund	Prof. Svcs-instructors	Kim Klose	6,095.00
				Check Total:	102.00
30069	11/21/2011	General Fund	Prof. Svcs-instructors	Cecilia Koschorreck	102.00
				Check Total:	738.40
30070	11/21/2011	General Fund	Instructors Prof Svcs	Lauren Laughlin	738.40
				Check Total:	352.00
30071	11/21/2011	General Fund	Prof. Svcs-instructors	Lori Leberer	352.00
				Check Total:	90.00
30072	11/21/2011	General Fund	Instructors Prof Svcs	Yon Lemieux	90.00
				Check Total:	120.00
30073	11/21/2011	General Fund	Prof. Svcs-instructors	Alexander Lewis	120.00
				Check Total:	1,170.00
30074	11/21/2011	General Fund	Prof. Svcs-instructors	Anne Marie Littleton	1,170.00
				Check Total:	854.10
30075	11/21/2011	Surface Water Management Fund	Repairs And Maintenance	Lloyd Enterprises, Inc.	854.10
30075	11/21/2011	Street Fund	Repairs And Maintenance	Lloyd Enterprises, Inc.	326.59
30075	11/21/2011	Surface Water Management Fund	Repairs And Maintenance	Lloyd Enterprises, Inc.	133.18
30075	11/21/2011	Surface Water Management Fund	Repairs And Maintenance	Lloyd Enterprises, Inc.	111.71
30075	11/21/2011	Street Fund	Repairs And Maintenance	Lloyd Enterprises, Inc.	110.38
30075	11/21/2011	Surface Water Management Fund	Repairs And Maintenance	Lloyd Enterprises, Inc.	62.71
30075	11/21/2011	Surface Water Management Fund	Repairs And Maintenance	Lloyd Enterprises, Inc.	248.95
30075	11/21/2011	Surface Water Management Fund	Repairs And Maintenance	Lloyd Enterprises, Inc.	127.95
30075	11/21/2011	Surface Water Management Fund	Repairs And Maintenance	Lloyd Enterprises, Inc.	186.19

Check Number	Check Date	Fund Name	Account Name	Vendor Name	Amount
30075	11/21/2011	Street Fund	Repairs And Maintenance	Lloyd Enterprises, Inc.	154.35
30075	11/21/2011	Street Fund	Repairs And Maintenance	Lloyd Enterprises, Inc.	151.75
				Check Total:	1,613.76
30076	11/21/2011	General Fund	Repairs & Maintenance	Magnum	136.88
30076	11/21/2011	General Fund	Repairs & Maintenance	Magnum	108.41
				Check Total:	245.29
30077	11/21/2011	General Fund	Prof. Svcs-instructors	Galina Malevannaya	120.00
				Check Total:	120.00
30078	11/21/2011	General Fund	Prof. Svcs-instructors	Jacob Matthew	728.00
				Check Total:	728.00
30079	11/21/2011	General Fund	Prof. Svcs-instructors	Susy McAleer	75.00
				Check Total:	75.00
30080	11/21/2011	General Fund	Instructors Prof Svcs	Hunter McGee	210.00
				Check Total:	210.00
30081	11/21/2011	General Fund	Office and Operating Supplies	McLendon Hardware, Inc.	27.36
30081	11/21/2011	Surface Water Management Fund	Office And Operating Supplies	McLendon Hardware, Inc.	92.17
30081	11/21/2011	Street Fund	Office And Operating Supplies	McLendon Hardware, Inc.	92.17
30081	11/21/2011	Street Fund	Office And Operating Supplies	McLendon Hardware, Inc.	40.58
30081	11/21/2011	Surface Water Management Fund	Minor Tools & Equipment	McLendon Hardware, Inc.	114.41
				Check Total:	366.69
30082	11/21/2011	General Fund	Instructors Prof Svcs	Momentum Dance Academy	525.20
				Check Total:	525.20
30083	11/21/2011	General Fund	B&O Tax collect & audit	Microflex, Inc.	1,927.74
30083	11/21/2011	General Fund	B&O Tax collect & audit	Microflex, Inc.	37.60
30083	11/21/2011	Street Fund	Dt Business License Svcs	Microflex, Inc.	2,629.56
30083	11/21/2011	Street Fund	Dt Business License Svcs	Microflex, Inc.	37.60
30083	11/21/2011	General Fund	Sales Tax Auditing Costs	Microflex, Inc.	267.00

Check Number	Check Date	Fund Name	Account Name	Vendor Name	Amount
30084	11/21/2011	General Fund	Office and Operating Supplies	Miller Paint Co.	4,899.50
				Check Total:	13.96
30085	11/21/2011	General Fund	Prof. Svcs-instructors	Scott A. Miller	13.96
				Check Total:	463.45
30086	11/21/2011	Surface Water Management Fund	Office And Operating Supplies	ANTHONY MOODY	463.45
				Check Total:	143.34
30087	11/21/2011	General Fund	Office/operating Supplies	Mountain Mist	143.34
				Check Total:	39.50
30088	11/21/2011	General Fund	Instructors Prof Svcs	Shariana Mundi	39.50
30088	11/21/2011	General Fund	Instructors Prof Svcs	Shariana Mundi	968.00
				Check Total:	264.00
30089	11/21/2011	General Fund	Instructors Prof Svcs	Aaron Murray	1,232.00
				Check Total:	160.00
30090	11/21/2011	General Fund	Instructors Prof Svcs	New City Dance Company	160.00
				Check Total:	1,141.40
30091	11/21/2011	General Fund	City Hall Custodial	National Maintenance	1,141.40
30091	11/21/2011	General Fund	Professional Services	National Maintenance	1,032.29
				Check Total:	150.00
30093	11/21/2011	General Fund	Professional Services	Office Of Minority & Women's	1,182.29
				Check Total:	150.00
30094	11/21/2011	Surface Water Management Fund	Repairs And Maintenance	O'Reilly Auto Parts	150.00
				Check Total:	19.31

Check Number	Check Date	Fund Name	Account Name	Vendor Name	Amount
30094	11/21/2011	Street Fund	Repairs And Maintenance	O'Reilly Auto Parts	19.31
30094	11/21/2011	Street Fund	Repairs And Maintenance	O'Reilly Auto Parts	8.74
30094	11/21/2011	Surface Water Management Fund	Repairs And Maintenance	O'Reilly Auto Parts	8.74
30094	11/21/2011	Street Fund	Repairs And Maintenance	O'Reilly Auto Parts	10.95
30094	11/21/2011	Surface Water Management Fund	Repairs And Maintenance	O'Reilly Auto Parts	10.94
30094	11/21/2011	Street Fund	Repairs And Maintenance	O'Reilly Auto Parts	6.01
30094	11/21/2011	Surface Water Management Fund	Repairs And Maintenance	O'Reilly Auto Parts	6.01
30094	11/21/2011	Street Fund	Repairs And Maintenance	O'Reilly Auto Parts	74.14
30094	11/21/2011	Surface Water Management Fund	Repairs And Maintenance	O'Reilly Auto Parts	74.13
30094	11/21/2011	Surface Water Management Fund	Repairs And Maintenance	O'Reilly Auto Parts	27.90
30094	11/21/2011	Street Fund	Repairs And Maintenance	O'Reilly Auto Parts	27.91
30094	11/21/2011	Street Fund	Repairs And Maintenance	O'Reilly Auto Parts	2.73
30094	11/21/2011	Surface Water Management Fund	Repairs And Maintenance	O'Reilly Auto Parts	2.72
Check Total:					299.54
30095	11/21/2011	General Fund	Instructors Prof Srvs	J. D. Paulson	350.00
Check Total:					350.00
30096	11/21/2011	General Fund	Office/operating Supplies	Petty Cash Custodian	37.78
30096	11/21/2011	General Fund	Mileage	Petty Cash Custodian	19.98
30096	11/21/2011	General Fund	Mileage	Petty Cash Custodian	13.32
30096	11/21/2011	General Fund	Office And Operating Supplies	Petty Cash Custodian	14.77
30096	11/21/2011	General Fund	Mileage	Petty Cash Custodian	21.09
30096	11/21/2011	General Fund	Mileage	Petty Cash Custodian	13.32
30096	11/21/2011	General Fund	Office/operating Supplies	Petty Cash Custodian	19.70
30096	11/21/2011	Transportation CIP	project development	Petty Cash Custodian	8.00
30096	11/21/2011	General Fund	Registration - Training/workshop	Petty Cash Custodian	31.87
30096	11/21/2011	General Fund	Office/operating Supplies	Petty Cash Custodian	3.98
30096	11/21/2011	General Fund	Office/operating Supplies	Petty Cash Custodian	37.98
30096	11/21/2011	General Fund	Registration - Training/workshop	Petty Cash Custodian	17.47
30096	11/21/2011	General Fund	Mileage	Petty Cash Custodian	13.32
30096	11/21/2011	General Fund	Comprehensive Plan Costs	Petty Cash Custodian	13.07
30096	11/21/2011	General Fund	Mileage	Petty Cash Custodian	9.99
30096	11/21/2011	General Fund	Mileage	Petty Cash Custodian	13.32
30096	11/21/2011	Street Fund	Repairs And Maintenance	Petty Cash Custodian	4.24
Check Total:					293.20
30097	11/21/2011	Street Fund	Office And Operating Supplies	Pacific Industrial Supply	19.05
30097	11/21/2011	Surface Water Management Fund	Office And Operating Supplies	Pacific Industrial Supply	19.06
30097	11/21/2011	Surface Water Management Fund	Office And Operating Supplies	Pacific Industrial Supply	114.01
30097	11/21/2011	Street Fund	Office And Operating Supplies	Pacific Industrial Supply	114.02

Check Number	Check Date	Fund Name	Account Name	Vendor Name	Amount
30097	11/21/2011	Street Fund	Small Tools & Minor Equipments	Pacific Industrial Supply	23.98
30097	11/21/2011	Surface Water Management Fund	Minor Tools & Equipment	Pacific Industrial Supply	23.98
30098	11/21/2011	General Fund	Postage	Reserve Account	314.10
30099	11/21/2011	General Fund	City Hall Bldg Maintenance	Pacific Lamp & Supply Company	5,000.00
30100	11/21/2011	General Fund	Building Maintenance	Performance Mechanical Group	5,000.00
30101	11/21/2011	General Fund	Office And Operating Supplies	Poly Bag, LLC	87.93
30102	11/21/2011	General Fund	Channel 21 Video Production	Puget Sound Access	109.50
30102	11/21/2011	General Fund	Online Video Streaming	Puget Sound Access	75.20
30103	11/21/2011	Street Fund	Utilities-street Lighting	Puget Sound Energy	75.20
30104	11/21/2011	General Fund	Right Of Way Use Permit	Ivan Cockrum	2,055.00
30105	11/21/2011	General Fund	Planning & Devel Fees/charges	Merrill L. Ames	1,595.16
30106	11/21/2011	Street Fund	Business Licenses	Diamond Roofing inc	1,595.16
					250.00
					250.00
					287.80
					287.80
					90.00
					90.00

Check Number	Check Date	Fund Name	Account Name	Vendor Name	Amount
30107	11/21/2011	Street Fund	Business Licenses	MTS Plumbing Contractors Inc	90.00
				Check Total:	90.00
30108	11/21/2011	Street Fund	Business Licenses	Aqualine Pool and Spa Inc	45.00
				Check Total:	45.00
30109	11/21/2011	Street Fund	Business Licenses	Brian Douglas Scott Planning &	37.50
				Check Total:	37.50
30110	11/21/2011	General Fund	Business & Occupation Tax	Kristopher Maudlien	1,052.56
				Check Total:	1,052.56
30111	11/21/2011	General Fund	Business & Occupation Tax	Naithan J Bosseler	13.18
				Check Total:	13.18
30112	11/21/2011	General Fund	Business & Occupation Tax	KD Construction	29.51
				Check Total:	29.51
30113	11/21/2011	General Fund	Business & Occupation Tax	Qwest Interprise America, Inc	15.22
				Check Total:	15.22
30114	11/21/2011	General Fund	Business & Occupation Tax	Rick the Plumber & Co Inc	32.16
				Check Total:	32.16
30115	11/21/2011	General Fund	Business & Occupation Tax	Hardie Flooring Center LLC	18.61
				Check Total:	18.61
30116	11/21/2011	General Fund	Business & Occupation Tax	NCS Development	7.63
				Check Total:	7.63
30117	11/21/2011	General Fund	Business & Occupation Tax	Commercial Interiors Inc	9.54
				Check Total:	9.54

Check Number	Check Date	Fund Name	Account Name	Vendor Name	Amount
30118	11/21/2011	General Fund	Security/performance Bond Payb	Vigil Jim	9.54
				Check Total:	1,170.00
30119	11/21/2011	General Fund	Security/performance Bond Payb	Erik Siderits	1,170.00
				Check Total:	468.00
30120	11/21/2011	General Fund	Refund Clearing Account -Parks	Mark Goodwin	468.00
				Check Total:	100.00
30121	11/21/2011	General Fund	Refund Clearing Account -Parks	Mayliza Garban	100.00
				Check Total:	400.00
30122	11/21/2011	General Fund	Refund Clearing Account -Parks	Grace Hong	400.00
				Check Total:	11.00
30123	11/21/2011	Surface Water Management Fund	Repairs And Maintenance	Renton Concrete Recyclers	11.00
30123	11/21/2011	Surface Water Management Fund	Repairs And Maintenance	Renton Concrete Recyclers	39.38
30123	11/21/2011	Surface Water Management Fund	Repairs And Maintenance	Renton Concrete Recyclers	39.38
				Check Total:	39.38
30124	11/21/2011	General Fund	Printing/binding/copying	Claude McAlpin, III	118.14
				Check Total:	16.37
30125	11/21/2011	General Fund	Professional Services	River Oaks Communications Corp	16.37
30125	11/21/2011	General Fund	Professional Services	River Oaks Communications Corp	1,086.76
				Check Total:	1,006.25
30126	11/21/2011	General Fund	Att Svcs - Litigation - 1st So	Ryan, Swanson & Cleveland	2,093.01
				Check Total:	1,050.00
				Check Total:	1,050.00

Check Number	Check Date	Fund Name	Account Name	Vendor Name	Amount
30127	11/21/2011	General Fund	Prof. Svcs-instructors	Sandra Schneider	180.00
				Check Total:	180.00
30128	11/21/2011	General Fund	Instructors Prof Svcs	Diana Amaranta Sandys	63.00
				Check Total:	63.00
30129	11/21/2011	General Fund	Advertising	Seattle Times	101.48
30129	11/21/2011	General Fund	Advertising	Seattle Times	91.16
30129	11/21/2011	General Fund	Advertising/legal Publications	Seattle Times	150.00
30129	11/21/2011	General Fund	Advertising	Seattle Times	67.32
				Check Total:	409.96
30130	11/21/2011	General Fund	Office And Operating Supplies	Seatown Locksmith	15.77
				Check Total:	15.77
30131	11/21/2011	General Fund	Computer Consultant Prof Svcs	SEITEL Systems, LLC	780.00
30131	11/21/2011	Street Fund	Computer Consultant Pro Svc	SEITEL Systems, LLC	130.00
30131	11/21/2011	Surface Water Management Fund	Computer Consultant Pro Svc	SEITEL Systems, LLC	130.00
30131	11/21/2011	General Fund	Computer Consultant Prof Svcs	SEITEL Systems, LLC	945.00
30131	11/21/2011	Street Fund	Computer Consultant Pro Svc	SEITEL Systems, LLC	157.50
30131	11/21/2011	Surface Water Management Fund	Computer Consultant Pro Svc	SEITEL Systems, LLC	157.50
				Check Total:	2,300.00
30132	11/21/2011	General Fund	Professional Services	Nancy Shattuck	1,820.00
				Check Total:	1,820.00
30133	11/21/2011	General Fund	Instructors Prof Svcs	Kevon Shea	382.50
				Check Total:	382.50
30134	11/21/2011	General Fund	Nuisance Abatement Costs	Sherwin-Williams Co.	21.14
				Check Total:	21.14
30135	11/21/2011	General Fund	Prof. Svcs-instructors	Gretchen Sinclair	240.00

Check Number	Check Date	Fund Name	Account Name	Vendor Name	Amount
30136	11/21/2011	Street Fund	Office And Operating Supplies	Six Robblees' Inc.	240.00
Check Total:					240.00
30137	11/21/2011	General Fund	Professional Services	Shiels Obletz Johnsen	10,880.25
30137	11/21/2011	Transportation CIP	Professional services	Shiels Obletz Johnsen	13,012.50
30137	11/21/2011	General Fund	Professional Services	Shiels Obletz Johnsen	690.00
Check Total:					3.95
30138	11/21/2011	General Fund	Telephone	SPRINT	24,582.75
30138	11/21/2011	General Fund	Misc. EOC	SPRINT	1,999.85
30138	11/21/2011	General Fund	Telephone	SPRINT	57.71
30138	11/21/2011	Street Fund	Telephone	SPRINT	290.56
30138	11/21/2011	Surface Water Management Fund	Telephone	SPRINT	290.55
30138	11/21/2011	General Fund	Telephone	SPRINT	290.55
30138	11/21/2011	General Fund	Telephone	SPRINT	202.98
30138	11/21/2011	General Fund.	Telephone	SPRINT	204.93
30138	11/21/2011	General Fund	Telephone	SPRINT	74.56
30138	11/21/2011	General Fund	Telephone	SPRINT	-18.05
30138	11/21/2011	General Fund	Telephone	SPRINT	43.13
Check Total:					3,436.77
30139	11/21/2011	Surface Water Management Fund	Professional services	Summit Security & Sound System	65.70
30139	11/21/2011	Street Fund	Professional Services	Summit Security & Sound System	65.70
Check Total:					131.40
30140	11/21/2011	Surface Water Management Fund	Repairs And Maintenance	Superlon Plastics	1,345.25
Check Total:					1,345.25
30141	11/21/2011	General Fund	P/H Heal Grant Exps	SvR Design Company	3,991.25
Check Total:					3,991.25
30142	11/21/2011	General Fund	Utilities	Southwest Suburban Sewer Dist.	172.50
30142	11/21/2011	General Fund	Utilities	Southwest Suburban Sewer Dist.	357.00
30142	11/21/2011	General Fund	Utilities	Southwest Suburban Sewer Dist.	51.00
30142	11/21/2011	General Fund	Utilities	Southwest Suburban Sewer Dist.	51.00

Check Number	Check Date	Fund Name	Account Name	Vendor Name	Amount
30142	11/21/2011	General Fund	Utilities	Southwest Suburban Sewer Dist.	70.00
30142	11/21/2011	General Fund	Utilities	Southwest Suburban Sewer Dist.	51.00
30142	11/21/2011	General Fund	Utilities	Southwest Suburban Sewer Dist.	129.00
30142	11/21/2011	General Fund	Utilities	Southwest Suburban Sewer Dist.	89.00
				Check Total:	970.50
30143	11/21/2011	General Fund	Instructors Prof Svcs	Train Builder Productions, LLC	332.50
				Check Total:	332.50
30144	11/21/2011	General Fund	Prosecution - City Atty	The Walls Law Firm	12,687.84
				Check Total:	12,687.84
30145	11/21/2011	General Fund	Teen Programs	Reginald Thomas	190.36
				Check Total:	190.36
30146	11/21/2011	General Fund	Instructors Prof Svcs	Ken Turner	1,092.00
				Check Total:	1,092.00
30147	11/21/2011	General Fund	Postage	U.S. POSTAL SERVICE	3,900.00
				Check Total:	3,900.00
30148	11/21/2011	General Fund	Instructors Prof Svcs	Fred Vaughan	60.00
				Check Total:	60.00
30149	11/21/2011	General Fund	Telephone	Verizon Wireless	43.01
30149	11/21/2011	General Fund	Telephone	Verizon Wireless	43.01
30149	11/21/2011	Street Fund	Telephone	Verizon Wireless	107.52
30149	11/21/2011	Surface Water Management Fund	Telephone	Verizon Wireless	150.54
30149	11/21/2011	General Fund	Telephone	Verizon Wireless	43.01
				Check Total:	387.09
30150	11/21/2011	General Fund	Jail contracts	WASPC-Regional Cities EHM	36.00
				Check Total:	36.00

Check Number	Check Date	Fund Name	Account Name	Vendor Name	Amount
30151	11/21/2011	Street Fund	Landscape Maint - Utilities	Water District No. 20	118.50
				Check Total:	118.50
30152	11/21/2011	Street Fund	Landscape Maint - Utilities	Water District No. 49	1,237.15
30152	11/21/2011	General Fund	Utilities	Water District No. 49	1,302.10
				Check Total:	2,539.25
30153	11/21/2011	Street Fund	Garbage Franchise Tech Assist	Wilder Environmental Consultin	1,727.15
				Check Total:	1,727.15
30154	11/21/2011	General Fund	Subscriptions/publications	West Payment Center	385.67
				Check Total:	385.67
30155	11/21/2011	General Fund	Jury & Witness Fees	Debra George	10.00
				Check Total:	10.00
30156	11/21/2011	General Fund	Jury & Witness Fees	Elizabeth Lopez Lopez	12.04
				Check Total:	12.04
30157	11/21/2011	General Fund	Jury & Witness Fees	Damani Williams	22.24
				Check Total:	22.24
30158	11/21/2011	General Fund	Jury & Witness Fees	Barbara Reamer	12.04
				Check Total:	12.04
30159	11/21/2011	Street Fund	Miscellaneous	Waste Management of Seattle	1,268.09
30159	11/21/2011	Surface Water Management Fund	Miscellaneous	Waste Management of Seattle	1,268.08
				Check Total:	2,536.17
30160	11/21/2011	General Fund	Seasonal Security	Washington Merchant Patrol LLC	220.00
				Check Total:	220.00

Check Number	Check Date	Fund Name	Account Name	Vendor Name	Amount
30161	11/21/2011	General Fund	Office And Operating Supplies	Walter E. Nelson Co.	129.82
30161	11/21/2011	General Fund	Office and Operating Supplies	Walter E. Nelson Co.	129.82
30161	11/21/2011	General Fund	Office Supplies	Walter E. Nelson Co.	129.83
30161	11/21/2011	General Fund	Office And Operating Supplies	Walter E. Nelson Co.	327.87
30161	11/21/2011	General Fund	Office Supplies	Walter E. Nelson Co.	327.87
Check Total:					1,045.21
30162	11/21/2011	General Fund	Professional Services	Washington State Patrol	50.00
Check Total:					50.00
30163	11/21/2011	General Fund	Prof. Svcs-instructors	Pamela Odegard	180.00
Check Total:					180.00
Report Total:					1,947,943.57